

Television coverage at the European Games

All the television and radio equipment needed to cover the European Games, which will be held in Greece during September will be supplied by The Marconi Company. The games, which will be seen by viewers throughout the Eurovision network, are being organized by The Association Hellenique D'athletisme Amateur (SEGAS).

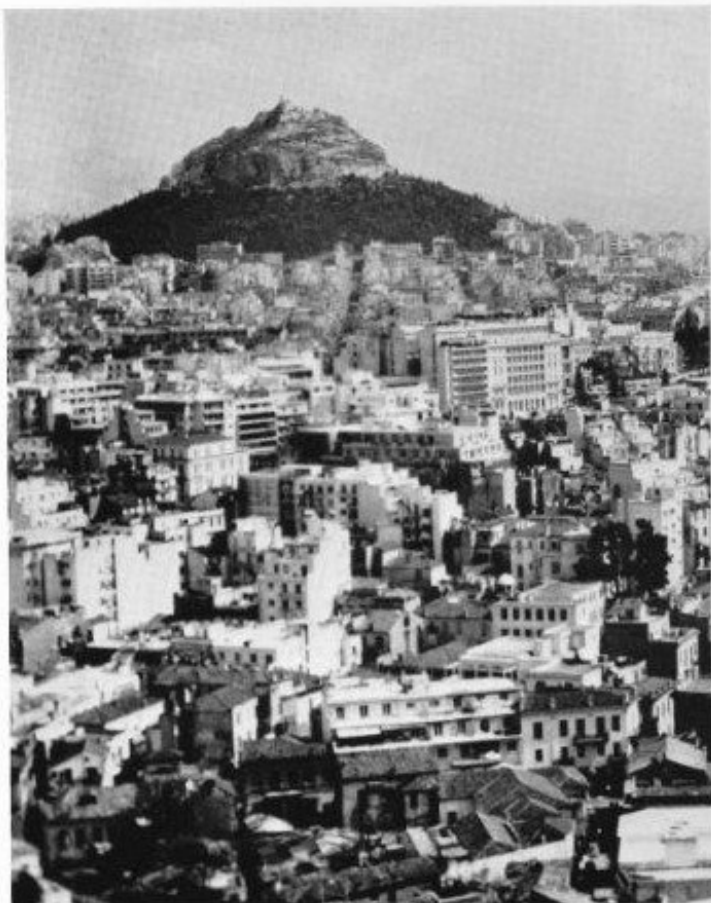
Most of the events will take place at the Karaiskaki stadium, near the port of Piraeus, but the opening and closing ceremonies will be held in the ancient Panathenaikon stadium near the Temple of Zeus in Athens. The Marathon starts from the modern village of Marathon and also finishes in the Panathenaikon stadium.

Thirteen Mark V monochrome cameras, mounted in three outside broadcast vehicles, as well as a full range of studio and microwave link equipment are being supplied. A five-camera unit will be located at Karaiskaki, with two four-camera units at Panathenaikon and Marathon. An additional camera, with associated microwave link equipment will be installed in a car to cover the Marathon from start to finish. Studio equipment includes vision control apparatus, presentation switcher, test equipment and video tape facilities with slow motion.

Other support facilities include sixty commentary positions completely equipped with all the required facilities, for sound and vision, plus various liaison and guide commentator positions. A control centre, sound interview studio and telephone and intercom equipment will be located principally at Karaiskaki, with a small facility at Panathenaikon.

Equipment for sophisticated microwave links is also being installed. The main link is between Karaiskaki and the O.T.E (Greek Telecommunications Organization) building. A secondary system, for the Marathon, consists of a 2,000MHz microwave vision transmitter on the tracking car feeding an omnidirectional antenna. A helicopter, equipped with a receiver and transmitter will relay pictures from either the car or the O.B unit at Marathon to tracking receivers at the two ground stations, Rafina junction and Mt. Hymettus. There will also be a microwave link between Rafina junction, Mt. Hymettus and Panathenaikon.

After the helicopter passes Rafina junction, line of sight communication between the helicopter and the Mt. Hymettus station can be maintained for the remainder of the route into Athens. The helicopter



The city of Athens as seen from the Parthenon.

tracking receiver installed at Mt. Hymettus will be equipped with monitoring and switching equipment to select either the helicopter - Rafina - Hymettus path or the helicopter - Hymettus path as required. All fixed and mobile stations involved in this operation will be linked by a v.h.f radio telephone order wire.

Marconi are also involved in the planning of the equipment buildings and in training SEGAS personnel in the operation and maintenance of the system to ensure complete familiarity before the start of the games in September. Acceptance trials will begin in April.

